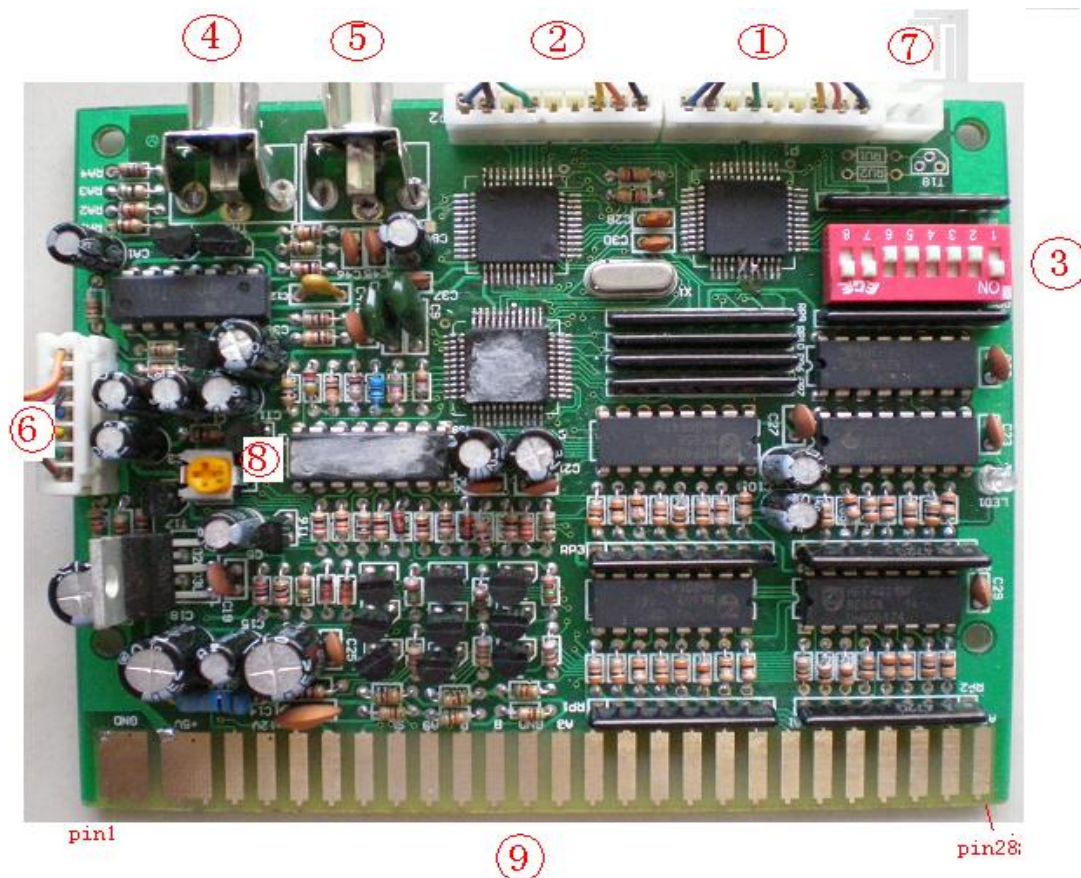


Instruction of time control panel for PS II interface

I、 General Function instruction

THE PS2 control interface for PS II console. It is a time control for a large game console whose game resources on the hard disk provided by the SONY PS2 game player through the process of copy. It supports joystick control, coin-operated time set, single/two players control, AV output, RGB output and volume adjusting.

II、 Specific Description of each function



1. One PLAYER (hereinafter referred to as the 1P) for PS line port, link this port with PSII console controller Port one
2. One PLAYER (hereinafter referred to as the 1P) for PS line port, link this port with PSII console controller Port two
3. time set by every coin in and special function option switch (See *Appendix 2:option set and function instruction* for details.)
4. Video output, linked with the yellow video input port on the TV.
5. Audio output, linked with the red or white input port on the TV.
6. Main signal(video and audio) input of the host game player.
7. Reset control output port on the controller
8. Volume output on golden touch, adjusting the volume
9. The golden touch faucet on the linker, linked with big joystick drop-out line
(See the *Appendix3: linker port instruction* for details about the function of the golden touch pin on the linker.)

III. Operation instruction

1. Whenever you link all the ports correctly according to the instruction above, the television screen will show PS2 game program menu interface and the phrases “INSERT COIN” “1P 00: 00” “2P 00: 00” will appear on the screen to remind you to insert game currency to obtain game time.

2. when you use up your game time, the time bar will be 1P 00: 00 2P 00: 00 and the phase “TIME OUT CONTINUE 9 8 7...`...0” will appear on the screen to ask you whether to insert game currency to continue the game or not. If you insert a game currency at once, you’ ll get game time and the phase will disappear.

2. “1P”, “2P”, refer to the joysticks for user 1 and for user 2 separately.

Appendix 3: CONNECT instruction for every pin

PS2 BUTTON		Top surface	Button Surface	PS2BUTTON	
1P		1P	2P	2P	
Game Pad button	Interface PIN	PIN	PIN	Game Pad button	Interface PIN
L2	1P KEY7	28	28	2P KEY7	L2
R1	1P KEY6	27	27	2P KEY6	R1
L1	1P KEY5	26	26	2P KEY5	L1
	1P KEY4	25	25	2P KEY4	
	1P KEY3	24	24	2P KEY3	
X	1P KEY2	23	23	2P KEY2	X
O	1P KEY1	22	22	2P KEY1	O
RIGHT	1P RIGHT	21	21	2P RIGHT	RIGHT
LEFT	1P LEFT	20	20	2P LEFT	LEFT
DOWN	1P DOWN	19	19	2P DOWN	DOWN
UP	1P UP	18	18	2P UP	UP
START	1P START	17	17	2P START	START
	1P COIN	16	16	2P COIN	
R2	1P KEY8	15	15	2P KEY8	R2

	VIDEO GND	14	14	MENU KEY	
	BLUE	13	13	SYN	
	RED	12	12	GREEN	
SELECT	1P KEY9	11	11	2P KEY9	SELECT
	SPEAKER	10	10	SPEAKER	
		9	9		
		8	8		
		7	7		
	+12V	6	6	+12V	
		5	5		
	+5V	4	4	+5V	
	+5V	3	3	+5V	
	GND	2	2	GND	
	GND	1	1	GND	

Appendix 2: Option setting and function instruction

a. the game time per coin can be set by adjusting the of SW1-SW5 1-30mins/cion

分钟/币 Minute/coin	SWICH 1 - 5				
	SW1	SW2	SW3	SW4	SW5
测试模式 Test model	OFF	OFF	OFF	OFF	OFF
1 Minute	ON	OFF	OFF	OFF	OFF
2 Minute	OFF	ON	OFF	OFF	OFF
3 Minute	ON	ON	OFF	OFF	OFF
4 Minute	OFF	OFF	ON	OFF	OFF
5 Minute	ON	OFF	ON	OFF	OFF
6 Minute	OFF	ON	ON	OFF	OFF
7 Minute	ON	ON	ON	OFF	OFF
8 Minute	OFF	OFF	OFF	ON	OFF

9 Minute	ON	OFF	OFF	ON	OFF
10 Minute	OFF	ON	OFF	ON	OFF
11 Minute	ON	ON	OFF	ON	OFF
12 Minute	OFF	OFF	ON	ON	OFF
13 Minute	ON	OFF	ON	ON	OFF
14 Minute	OFF	ON	ON	ON	OFF
15 Minute	ON	ON	ON	ON	OFF
16 Minute	OFF	OFF	OFF	OFF	ON
17 Minute	ON	OFF	OFF	OFF	ON
18 Minute	OFF	ON	OFF	OFF	ON
19 Minute	ON	ON	OFF	OFF	ON
20 Minute	OFF	OFF	ON	OFF	ON
21 Minute	ON	OFF	ON	OFF	ON
22 Minute	OFF	ON	ON	OFF	ON
23 Minute	ON	ON	ON	OFF	ON
24 Minute	OFF	OFF	OFF	ON	ON
25 Minute	ON	OFF	OFF	ON	ON
26 Minute	OFF	ON	OFF	ON	ON
27 Minute	ON	ON	OFF	ON	ON
28 Minute	OFF	OFF	ON	ON	ON
29 Minute	ON	OFF	ON	ON	ON
30 Minute	OFF	ON	ON	ON	ON
FREE	ON	ON	ON	ON	ON

b. SW6—SW8 Specific function of SW6—SW8

SW6 slot number option switch

SW6=ON If two users insert coins to the same slot, do as the followings: after a user insert a coin to the slot, there will be a yellow number **1-9** between the time bars of 1P and 2P on the screen. When 1p press START and hold 1S, the time bar of 1P will show the time which SW1-SW5 set. When 2P press START and hold 1S, the time bar of 2P will show the time set by SW1-SW5 .

SW6=OFF When two users inset coins to two separate slots, do as followings: when 1P insert a coin to slot 1, the time bar of 1P will show the time set by SW1-SW5. (If the time bar of 2P shows the same time as 1P' s, please see SW8 setting instruction for details.)

SW7 back to menu setting switch

SW7=ON When the time bars of 1P and 2P show “time out 9 8 7 …… 0”, PSII host player will reset console.

SW7=OFF When the time bars of 1P and 2P show “time out 9 8 7 …… 0”, PSII host player won' t reset console.

SW8 1P and 2P increment time when coin in switch setting

SW8=ON when a user inserts coin to slot 1P, the time bar of 1p will show a relevant time set by SW1-SW5.

when a user inserts coin to slot 2P, the time bar of 2p will show a relevant time set by SW1-SW5.

SW8=OFF When a user insert coin to the slot, the time bars of 1P and 2P will show the same relevant time set by SW1-SW5.

Note: This model works only when SW6=OFF.

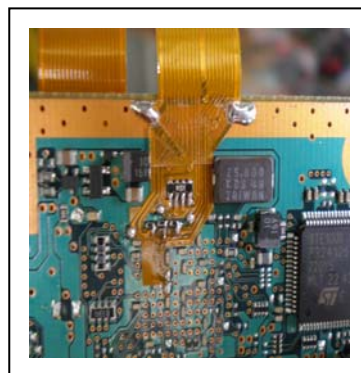
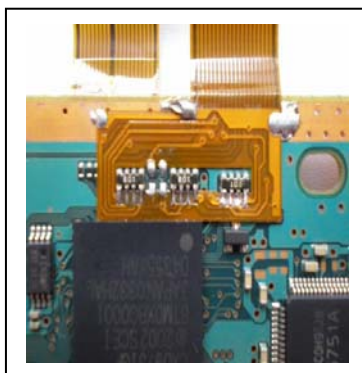
IV、 connection mode

Please link PS two 70000 Console, controller interface, game player display/monitor as the following photo shows.

a. 70000 PS console and PS interface, game Hardisk, memory card, connect .



b. closeup pictures of hard disk interface



c. closeup pictures of modify for reset switch circuit

